



THE KIELDER

LODGE

The epitome of modern bliss

Leave it all behind, without missing any of your creature comforts. The Kielder, with all the mod cons you need and its open plan living space, is every inch the contemporary escape. Simple yet sublimely styled, with an expansive interior that flexes effortlessly with the ebb and flow of every day, packed with no end of high spec features, it's tailor-made for a spot of thoroughly modern escapism.





Stunning comfort, breathtaking views

With every little luxury you could possibly wish for, your relaxation starts almost instantaneously in The Kielder.

Sink into sumptuous sofas and take in views of the great outdoors through those expansive windows, entertain around the table or make it a quiet night in, it's all up to you.



Unwind around the table over a long, lazy brunch. Enjoy a little me time curled up amongst the cushions. Rustle up masterful dinners and picnic favourites effortlessly in the well-equipped kitchen. Switch off completely here.



Whether the perfect day starts with waking up in the cloud-like comfort of a luxurious bed or enjoying fresh coffee out on a sun-drenched deck, The Kielder has every kind of modern comfort covered.







When night draws in, retire to the sanctuary of the master suite. With its walk-in wardrobe, bedtime is always calm and clutter free. With such a luxurious mattress, it's easy to drift off into a deep and satisfying sleep.





ALL THIS INCLUDED

- ✓ Fully galvanised heavy duty chassis
- ✓ Chateaux grey hard PVCu cladding
- ✓ Front French patio doors
- ✓ White 'Low E' PVCu Thermaglass double glazing
- ✓ Residential specification BS3632
- ✓ Exterior lights including canopy lighting
- ✓ Externally vented powered cooker hood
- ✓ Integrated fridge freezer
- ✓ Integrated microwave
- ✓ 40mm worktops
- ✓ TV point in all bedrooms
- ✓ Lift-up bed in main bedroom
- ✓ USB sockets in all bedrooms
- ✓ Full condensing boiler gas central heating
- ✓ 2 free-standing sofas
- ✓ Scatter cushions in lounge
- ✓ Free-standing dining table & chairs
- ✓ Additional sockets next to TV point in lounge
- ✓ USB socket in lounge
- ✓ Satellite co-ax
- ✓ Luxury soft-close toilet
- ✓ Shaver socket
- ✓ Bathroom extractor fans
- ✓ Bathroom with domestic style bath
- ✓ Stylish pictures throughout

OPTIONAL EXTRAS

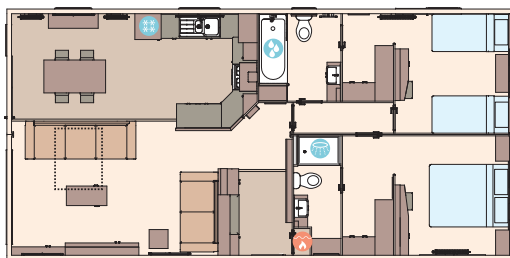
- ✓ CanExel™ exterior cladding (available in D5 Ridgewood or Ced-R-Vue styles)
- ✓ Luxury Pack
- ✓ Pull-out bed in lounge
- ✓ Alternative bedroom configurations (see layouts)

INCLUDED IN LUXURY PACK

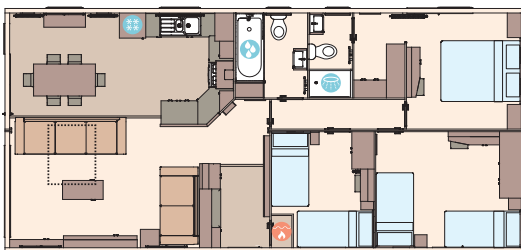
- ✓ Integrated dishwasher
- ✓ Integrated washing machine
- ✓ 'Exclusive' pocket sprung mattresses
- ✓ Plain duvet covers and pillowcases

STANDARD

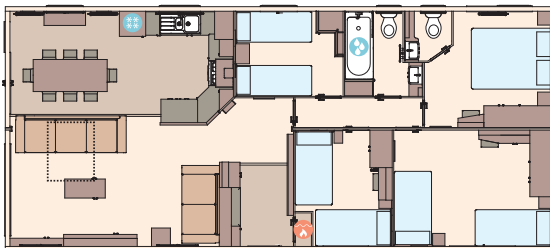
THE KIELDER - 40FT X 20FT X 2 BEDROOM



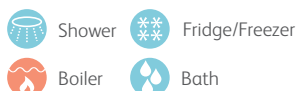
THE KIELDER - 41FT X 20FT X 3 BEDROOM



THE KIELDER - 44FT X 20FT X 4 BEDROOM

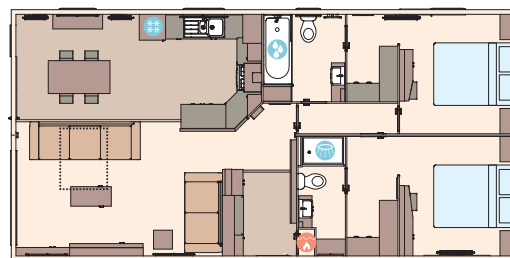


KEY:

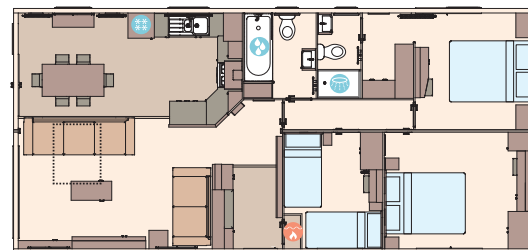


OPTIONAL

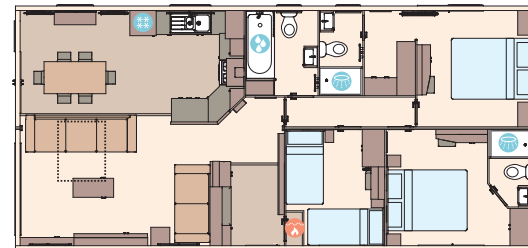
THE KIELDER - 40FT X 20FT X 2 BEDROOM DOUBLE BED OPTION



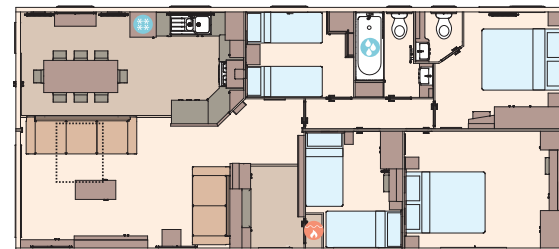
THE KIELDER - 41FT X 20FT X 3 BEDROOM DOUBLE BED OPTION



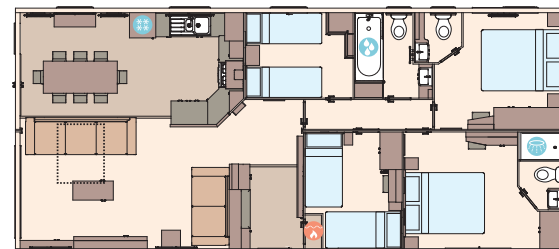
THE KIELDER - 41FT X 20FT X 3 BEDROOM DOUBLE EN SUITE OPTION



THE KIELDER - 44FT X 20FT X 4 BEDROOM DOUBLE BED OPTION



THE KIELDER - 44FT X 20FT X 4 BEDROOM DOUBLE EN SUITE OPTION



For further information and to take an interactive virtual tour of The Kielder, visit www.abiuk.co.uk

