







# The Windermere

This firm favourite and homely hideaway is back, now in a dusky cornflower blue. With a thoughtful kitchen design and every curve of the sofa redesigned for maximum ahhh-factor on every slump, it's primed for laid-back living.





### *A walk-in wardrobe for fancier dressing*

Please note: Some items featured in this photography are scene-setting props or optional extras, not included in your purchase. Please speak to your park or dealership or refer to the 'all this included' section for this holiday home.









Shows optional full front sliding doors, see page 53

## Highlights:

- Brand new model for 2024
- Luxury living in 12ft and 13ft wide holiday home
- En suite with shower in the 40ft x 12ft/13ft 2 bedroom models
- Free-standing domestic style sofas



Shows optional full front sliding doors, see page 53

# The Windermere

A homely haven thoughtfully designed to deliver maximum comfort, this holiday home is available in four different layouts. Pick the model that suits you.



For more information and to take a virtual tour, visit [www.abiuk.co.uk](http://www.abiuk.co.uk)

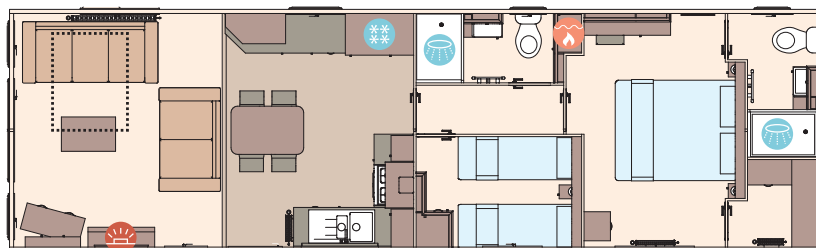
## All this included

- ✓ Matt finish Champagne aluminium cladding
- ✓ Carpet underlay throughout
- ✓ Scatter cushions in lounge
- ✓ Electric fire
- ✓ USB socket in lounge
- ✓ Additional sockets next to TV point in lounge
- ✓ Free-standing dining table and chairs
- ✓ Externally vented powered cooker hood
- ✓ Integrated fridge freezer
- ✓ 40mm worktops
- ✓ Soft-close hinges on doors and drawers in kitchen
- ✓ Lift-up bed in master bedroom
- ✓ King size bed in master bedroom (except 40ft x 12ft 3 bed model)
- ✓ TV point in master bedroom and one twin room
- ✓ Plain duvet covers and pillowcases
- ✓ Bed runner and scatter cushions on all beds
- ✓ USB sockets in all bedrooms
- ✓ Shaver socket
- ✓ Bathroom extractor fans

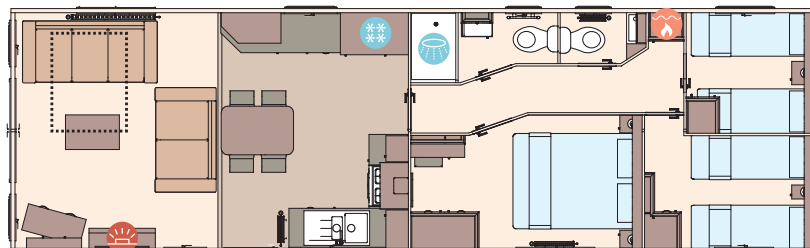
- ✓ Coat hooks in all bathrooms
- ✓ Composite kitchen sink
- ✓ Separate second toilet (3 bedroom models only)
- ✓ Separate en suite shower and toilet (2 bedroom models only)
- ✓ Voiles throughout

## Add any of these

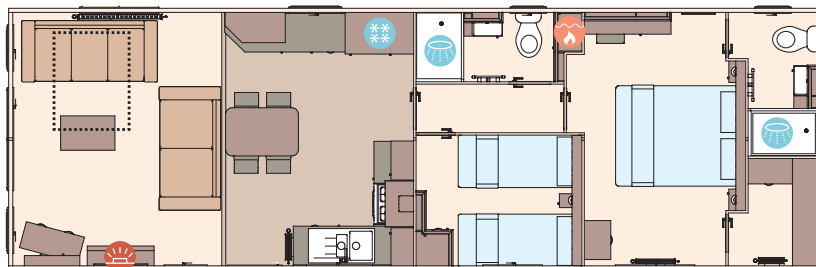
- ☐ Residential specification BS3632 (available on 13ft models only)
- ☐ Fully galvanised chassis
- ☐ 'Low E' PVCu Thermaglass double glazing
- ☐ Winter premium pack
- ☐ Winter electric pack
- ☐ Exterior door options available
- ☐ Integrated microwave oven
- ☐ Integrated dishwasher
- ☐ Integrated washing machine
- ☐ Bluetooth sound system in lounge
- ☐ 'Exclusive' pocket sprung mattresses
- ☐ Space saver bed (twin room only)



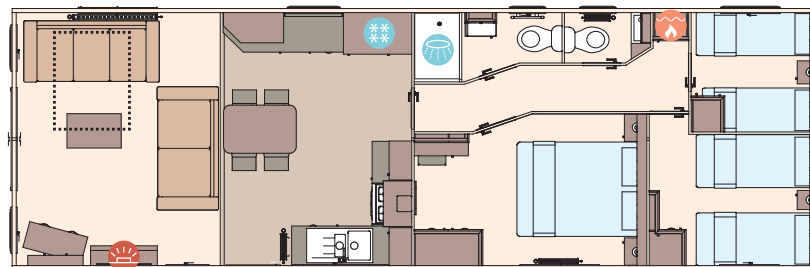
The Windermere 40ft x 12ft x 2 bedroom



The Windermere 40ft x 12ft x 3 bedroom



The Windermere Residential 40ft x 13ft x 2 bedroom



The Windermere Residential 40ft x 13ft x 3 bedroom

KEY: Fire Water heater Shower Fridge/Freezer Front pull out bed

OPTIONAL  
Residential  
specification  
BS3632  
See Page 86

OPTIONAL  
WINTER  
PACKS  
See Page 86