



The Harrogate Lodge

A blend of style and serenity

Discover an irresistible blend of modern sophistication and timeless charm. The Harrogate lodge encapsulates an abundance of contemporary luxury. It's thoughtfully designed for moments that are there to be savoured - from the theatre of the kitchen dining area to the majesty of the master suite, every feature has been curated to give you an unforgettable stay.



Magic and modern elegance

Find yourself in a space that is both fresh and familiar. From afternoons stretched out and sunk into sofas to evenings spent under a blanket of stars, moments of magic are just waiting to be found everywhere.



This is a naturally entertaining space. Take your time to gather and unwind in your sleek and stylish kitchen, made for days discussed and stories shared. Create lasting memories within a harmonious blend of modern and traditional design, as the living area invites you to slow down and indulge in the splendour of your surroundings.



From the rich wood accents that complement the glow of natural light, to the deep, rich tones of our new colour scheme, every element has been selected specifically to create a warm and inviting ambience.







Then, when you retire to the sanctuary of the master bedroom, you will find a haven of relaxation and contentment. With its plush fabrics and elegant furnishings, this space gives you the kind of tranquillity designed to rejuvenate you after a day of exploration.





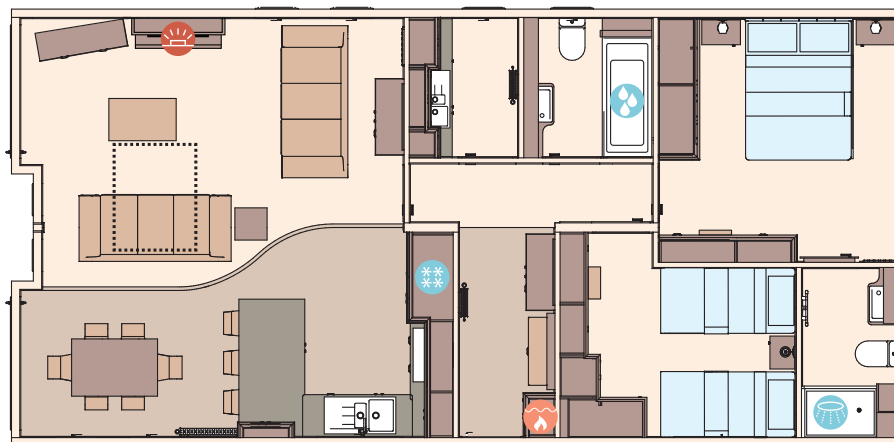
ALL THIS INCLUDED

- ✓ Fully galvanised heavy duty chassis
- ✓ CanExel™ exterior Timberwolf cladding in Ced-R-Vue styling
- ✓ ClimaGuard 'Low E' PVCu argon-filled double glazing fitted to all doors and windows
- ✓ VELUX® rooflight window in kitchen
- ✓ Residential specification BS3632
- ✓ Exterior lights including canopy lighting
- ✓ High quality internal door frames and doors
- ✓ Feature ceiling board
- ✓ Entrance hall and cloakroom
- ✓ Utility room including porcelain sink, integrated washing machine and high capacity extractor fan (2 bedroom model)
- ✓ Utility area including integrated washing machine and high capacity extractor fan (3 bedroom model)
- ✓ Integrated oven and 5 burner gas hob
- ✓ Externally vented cooker hood
- ✓ Integrated fridge freezer
- ✓ Integrated microwave
- ✓ Porcelain kitchen sink
- ✓ Integrated dishwasher
- ✓ Deluxe NEFF appliances including microwave, oven and hob
- ✓ Wooden fitted cutlery tray
- ✓ 40mm worktops
- ✓ Breakfast bar with 3 stools
- ✓ Deluxe Bluetooth sound system
- ✓ TV point in master bedroom and twin room
- ✓ Brushed chrome switches throughout
- ✓ Divan beds throughout and lift-up storage king size main bed
- ✓ Bedside wall lights
- ✓ Bathroom with 1700mm all-in-one GRP bath and shower enclosure
- ✓ En suite shower in master bedroom
- ✓ Feature electric fire
- ✓ Contemporary radiators in lounge and master bedroom
- ✓ Condensing boiler and gas central heating
- ✓ Luxury soft-close toilets
- ✓ 2 free-standing sofas with scatter cushions
- ✓ Fold-out bed in lounge
- ✓ Lounge pouffe including storage
- ✓ Floor standing lamp in lounge
- ✓ Plain duvet covers, pillowcases, bedthrows and scatter cushions
- ✓ 'Exclusive' pocket sprung mattresses
- ✓ Satellite co-ax
- ✓ USB sockets for convenience
- ✓ Shaver socket in main bathroom and en suite
- ✓ Soft-close hinges throughout
- ✓ Increased storage in utility room (2 bedroom model)
- ✓ Free-standing dining table and 6 chairs to all models
- ✓ Feature wood panelling walls in master bedroom and 1 x twinroom

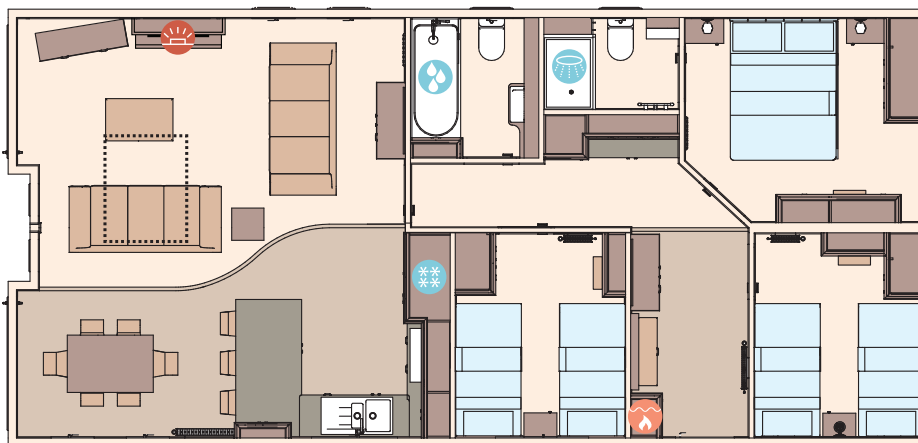
OPTIONAL EXTRAS

- ✓ Lindab® magestic galvanised gutters and downpipes in lieu of domestic style guttering

THE HARROGATE - 41FT X 20FT X 2 BEDROOM



THE HARROGATE - 42FT X 20FT X 3 BEDROOM



KEY: Fire Boiler Shower Bath Fridge/Freezer Front pull out bed



For further information and to take an interactive virtual tour of The Harrogate, visit www.abiuk.co.uk

