







# The Windermere

Sink into an easy come, easy flow way of life. Restore calm in this home-from-home hideaway. Royal blue accents meander throughout, from the spacious, well-equipped kitchen, to the welcoming glow of the bedside lighting. Every detail is crafted for your comfort.





*Ready to holiday homely?*

Please note: Some items featured in this photography are scene-setting props or optional extras, not included in your purchase. Please speak to your park or dealership or refer to the 'all this included' section for this holiday home.





Shows optional full front sliding door, see page 53





## Highlights:

- Luxury living in 12ft and 13ft wide holiday home
- En suite with shower in the 40ft x 12ft/13ft 2 bedroom models
- Free-standing domestic-style sofas
- Spacious and contemporary kitchen with larder unit
- Option to upgrade to BS3632 residential specification on 13ft models



# The Windermere

Thoughtfully designed with the simplicity and comfort of home in mind, this holiday home is available in four different layouts. Choose the model that suits you.



For more information and to take a virtual tour, visit [www.abiuk.co.uk](http://www.abiuk.co.uk)

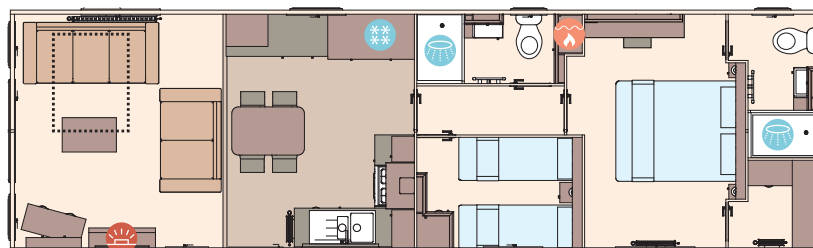
## All this included

- ✓ Matt finish Champagne aluminium cladding
- ✓ Carpet underlay throughout
- ✓ Scatter cushions in lounge
- ✓ Luxury wood burner style feature fire
- ✓ USB socket in lounge
- ✓ Additional sockets next to TV point in lounge
- ✓ Free-standing dining table and chairs
- ✓ Externally vented powered cooker hood
- ✓ Integrated fridge freezer
- ✓ 40mm worktops
- ✓ Soft-close hinges on doors and drawers in kitchen
- ✓ Lift-up bed in master bedroom
- ✓ King size bed in master bedroom (except 40ft x 12ft 3 bed model)
- ✓ TV point in master bedroom and one twin room
- ✓ Plain duvet covers and pillowcases
- ✓ Bed runner and scatter cushions on all beds
- ✓ USB sockets in all bedrooms
- ✓ Shaver socket
- ✓ Bathroom extractor fans
- ✓ Hooks in all bathrooms
- ✓ Composite kitchen sink
- ✓ Separate second toilet (3 bedroom models only)

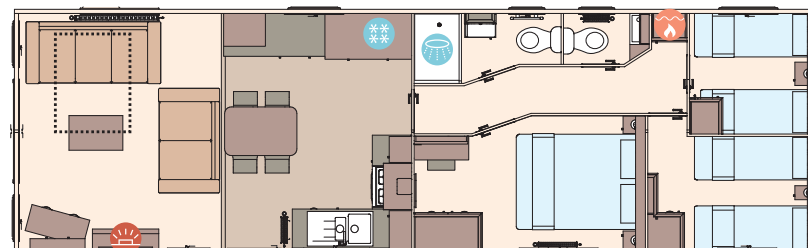
- ✓ Separate en suite shower and toilet (2 bedroom models only)
- ✓ Voiles throughout
- ✓ Additional storage in walk-in robe area in master bedroom (2 bedroom models only)
- ✓ Kitchen larder unit with spice racks
- ✓ Crib 5 mattresses to all bedrooms

## Add any of these

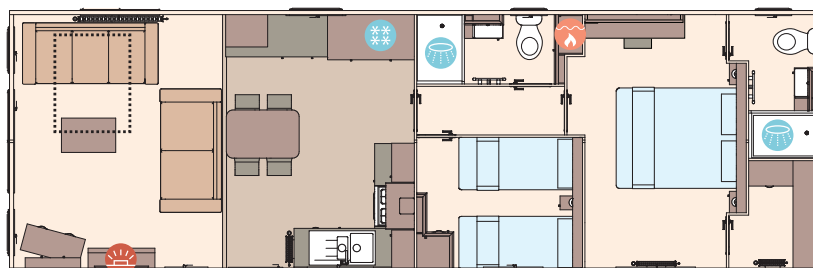
- ☐ Residential specification BS3632 (available on 13ft models only)
- ☐ Fully galvanised chassis
- ☐ 'Low E' PVCu Thermaglass argon-filled double glazing
- ☐ Winter premium pack
- ☐ Winter electric pack
- ☐ Exterior door options available
- ☐ Integrated microwave oven
- ☐ Integrated dishwasher
- ☐ Integrated washing machine
- ☐ Bluetooth sound system in lounge
- ☐ 'Exclusive' pocket sprung mattresses
- ☐ Space saver bed (twin room only)



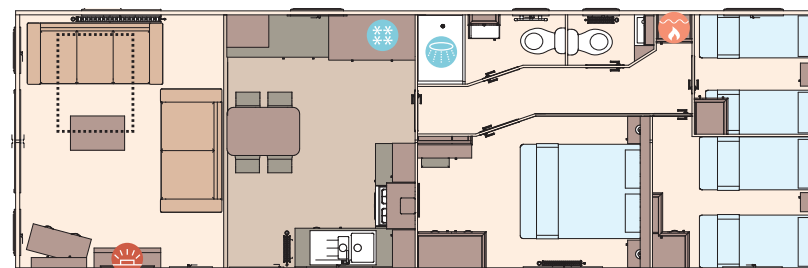
The Windermere 40ft x 12ft x 2 bedroom



The Windermere 40ft x 12ft x 3 bedroom



The Windermere Residential 40ft x 13ft x 2 bedroom



The Windermere Residential 40ft x 13ft x 3 bedroom

KEY: Fire Water heater Shower Fridge/Freezer Front pull out bed

OPTIONAL  
Residential  
specification  
BS3632  
See Page 86

OPTIONAL  
WINTER  
PACKS  
See Page 86